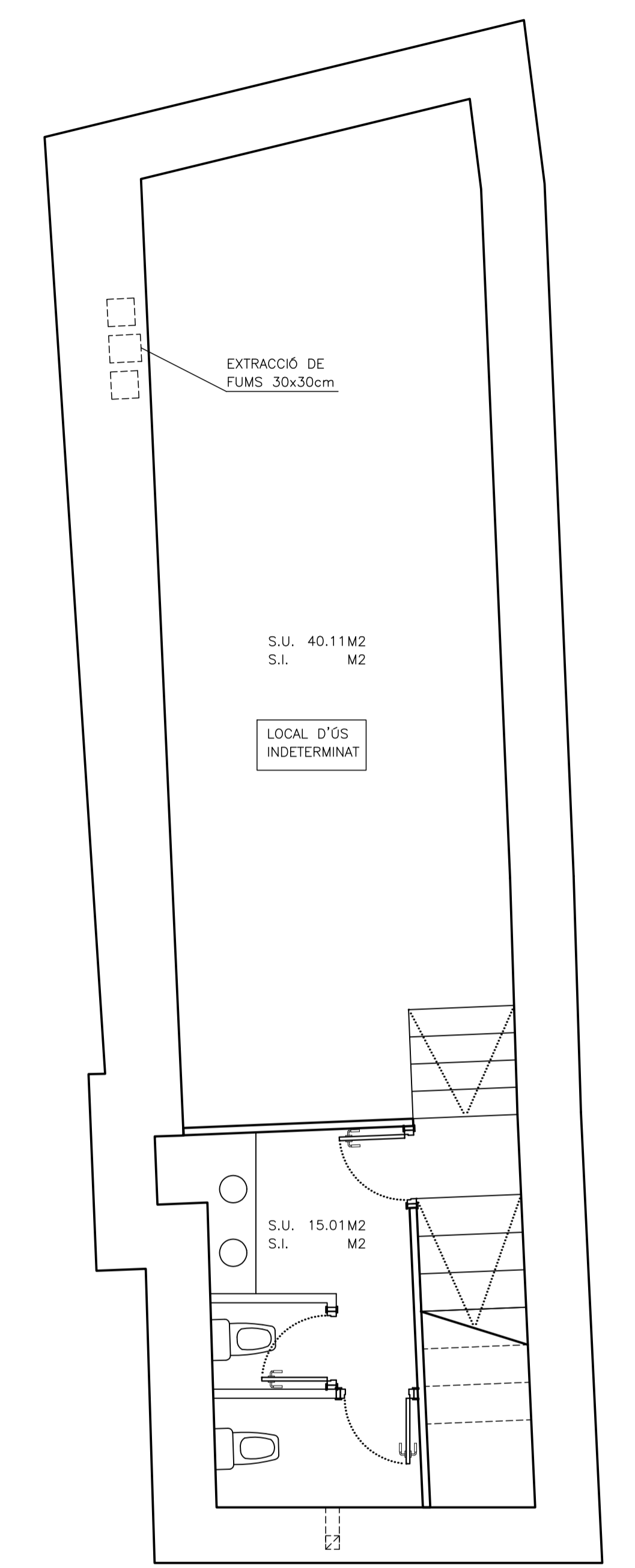


PLANTA BAIXA



PLANTA SOTERRANI

| PLANTA | SUPERFÍCIES CONSTRUÏDES | | | | |
|-----------------|-------------------------|----------------|------------------|----------------|--------------|
| | SUPERF. CONST. (1) | PORXOS 50% (2) | TOTAL VIV. (1+2) | ESP AIS COMUNS | TOTAL PLANTA |
| PL. TERRAT | 24.99 m2 | m2 | m2 | m2 | 24.99 m2 |
| PL. P2 | 78.25 m2 | m2 | m2 | 12.42 m2 | 90.67 m2 |
| PL. P1 | 129.01 m2 | m2 | m2 | 12.42 m2 | 141.43 m2 |
| PL. BAIXA | 126.06 m2 | 40.55 m2 | m2 | 17.31 m2 | 163.65 m2 |
| PL. SOTER. | 84.09 m2 | m2 | m2 | m2 | 84.09 m2 |
| TOTAL CONSTRUÏT | | | | | 504.83 m2 |