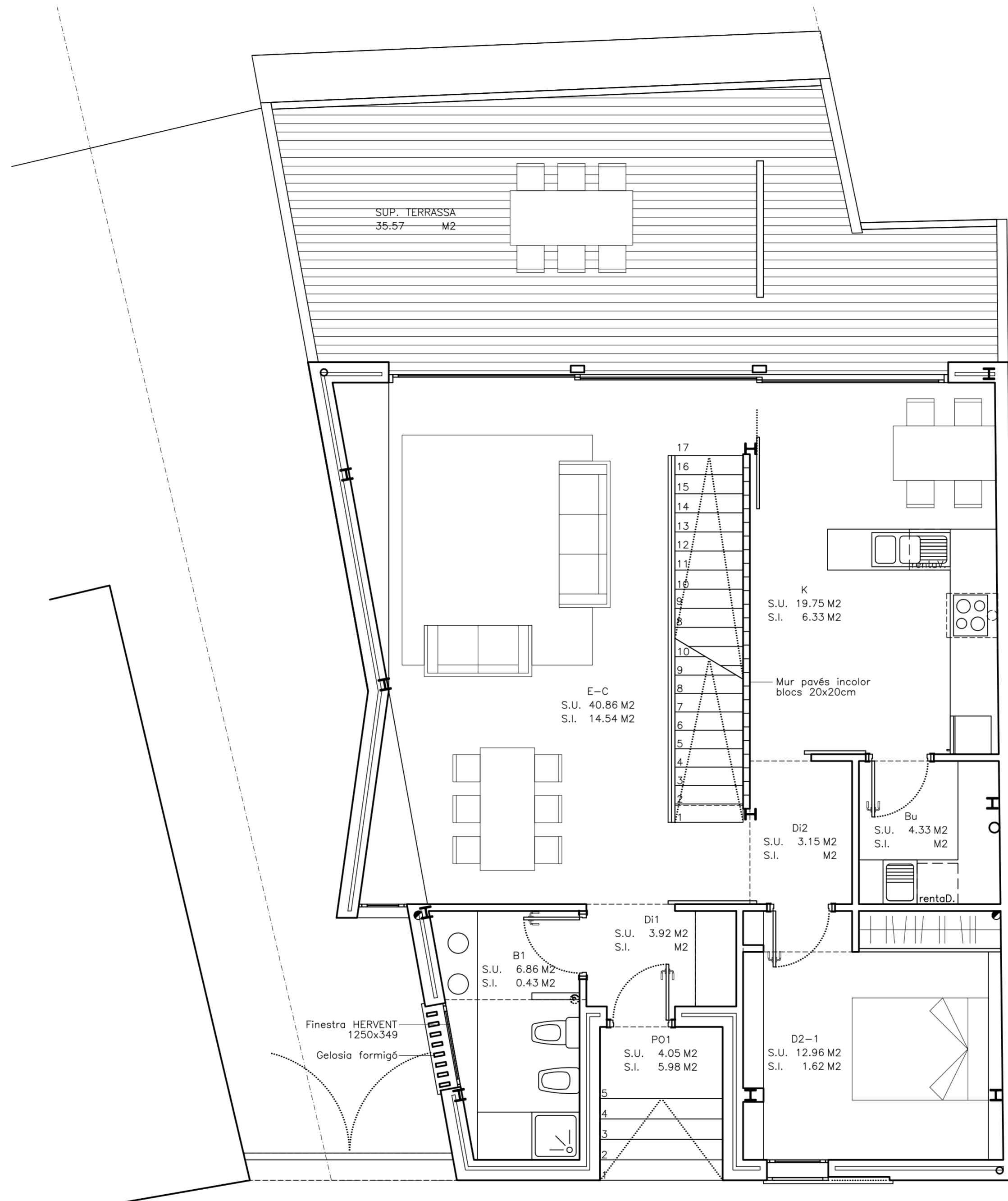
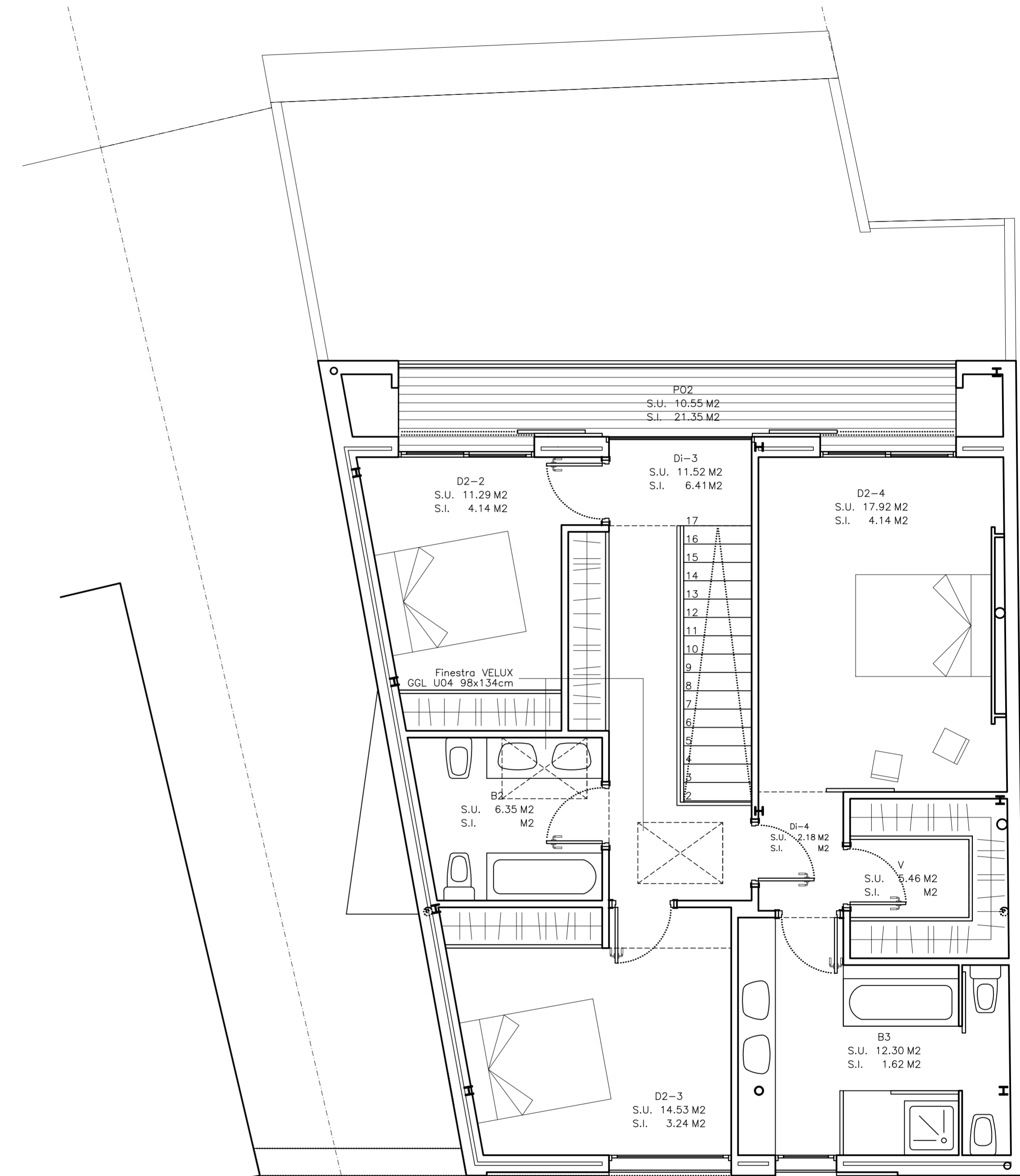


PLANTA SOTERRANI



PLANTA BAIXA



PLANTA PIS

PLANTA	SUPERFÍCIES CONSTRUÍDES			TOTAL PL. (1+2+3)
	SUPERF. CONST. (1)	PORXOS 50% (2)	PÉRGOLES 25% (3)	
PL. 1*	110.50 m ²	0,00 m ²	0,00 m ²	110.50 m ²
PL. BAIXA	112.25 m ²	0,00 m ²	0,00 m ²	112.25 m ²
PL. SOTERRANI	148.82 m ²	0,00 m ²	0,00 m ²	148.82 m ²
			TOTAL EDIFICI	371.57 m ²